

This information is important. If you require a translation in your native language please contact **0845 602 5761, quoting: 32991.**

Turkish: Bu bilgiler önemlidir. Anadilinizde bir çeviriye ihtiyacınız varsa, lütfen 0845 602 5761 numaralı telefondan alıntı yapın: 32991.

Romanian: Această informație este importantă. Dacă aveți nevoie de o traducere în limba maternă vă rugăm să contactați 0845 602 5761, citând: 32991.

Albanian: Ky informacion është i rëndësishëm. Nëse keni nevojë për një përkthim në gjuhën tuaj amtare, ju lutem kontaktoni 0845 602 5761, duke

Bulgarian: Тази информация е важна. Ако имате нужда от превод на родния си език, моля свържете се 0845 602 5761, цитирайки: 32991.

Somali: Macluumaadkani waa muhiim. Haddii aad u baahan tahay turjumaad afkaaga hooyo fadlan la xiriiir 0845 602 5761, isagoo tixraacaya: 32991.

Bengali: এই তথ্যটি গুরুত্বপূর্ণ। আপনি আপনার স্থানীয় ভাষায় একটি অনুবাদ প্রয়োজন হলে 0845 602 5761 সাথে যোগাযোগ করুন, মূল্য উদ্ধৃতি: 32991।

Date: 1st June 2017

RE: SPURS FOOTBALL STADIUM PROJECT:

Updated Dates: Park Lane closure and surrounding parking bay suspensions

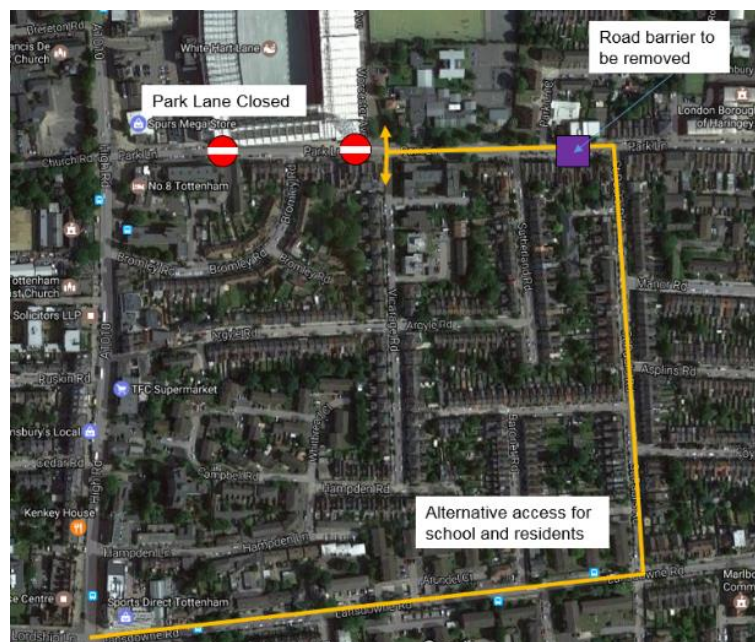
Dear Neighbours

As communicated in our letter of 6th April, Park Lane will be closed for a temporary period and some parking in the neighbouring area will be suspended. Due to changes in the demolition works programme we are bringing forward the dates that were initially communicated - the new dates are **12th June until 23rd July 2017**. The decision to change the dates has been taken because it is likely to assist the project team to reduce the overall time taken for the demolition, which we hope will reduce the impact on the community. However we apologise for any inconvenience caused by the road closure and the change in dates.

A section of Park Lane and the corresponding parking bays will be suspended to ensure safety of the area for dismantling the Southern truss of the Stadium.

To the right is a map showing the road closure and suggested alternative access for vehicles to the area.

We regret the inconvenience caused by the road closures and parking suspensions and thank you for your patience while these essential works take place.



• **Park Lane** – the section of roadway outlined overleaf will be closed for a period of approximately six weeks from **12th June 2017** until **23rd July 2017**. The southern footpath furthest away from the stadium on Park Lane will continuously remain open to pedestrians. Access to the remaining open section of Park Lane can be via St Paul's Road as per the map overleaf.

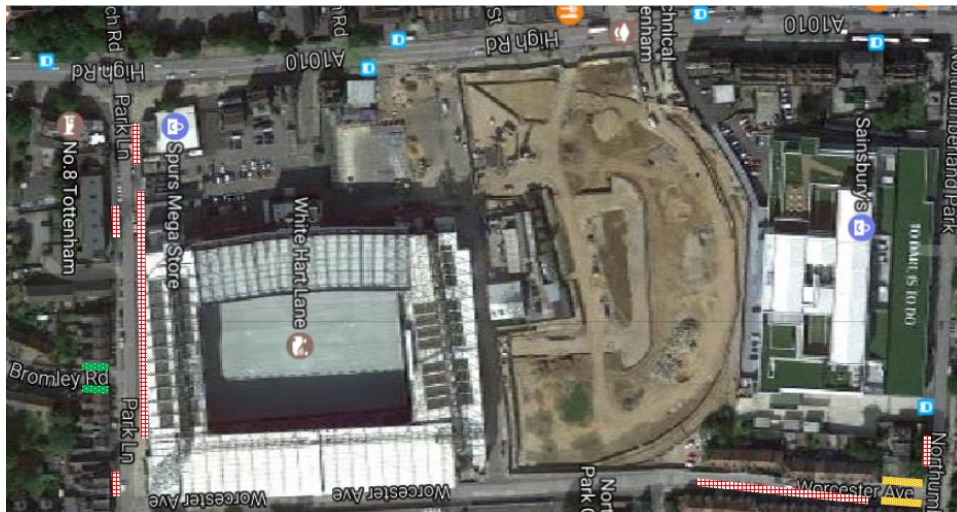
• **Worcester Avenue** – the area highlighted above has already been closed to the public and will be closed for the duration of the construction works (**15th May 2017 to August 2018** – subject to review). Parking Bays will be suspended (as shown on the map overleaf). Alternative pedestrian access for schools has been arranged to minimise disruption for students.

Parking bay suspension

To maintain safe traffic routes to the construction site, Mace has been authorised to suspend some parking bays in the area.

The map overleaf shows the location of parking bays which will be suspended.

- Bays in red will be suspended from **15th May 2017 to September 2018**.
- Bays indicated in green (on Bromley Road) will be suspended from **12th June 2017 to 23rd July 2017**.
- Bays in orange (on Worcester Avenue) will be suspended from **15th May 2017 until 21st August 2018**.



If you wish to be contacted directly about these works please either email your question to tottenham@fm-24.com or call: **0845 602 5761**, quoting: **32991**.

Yours sincerely,

Laura Hampson
Mace Construction
Community Engagement Manager